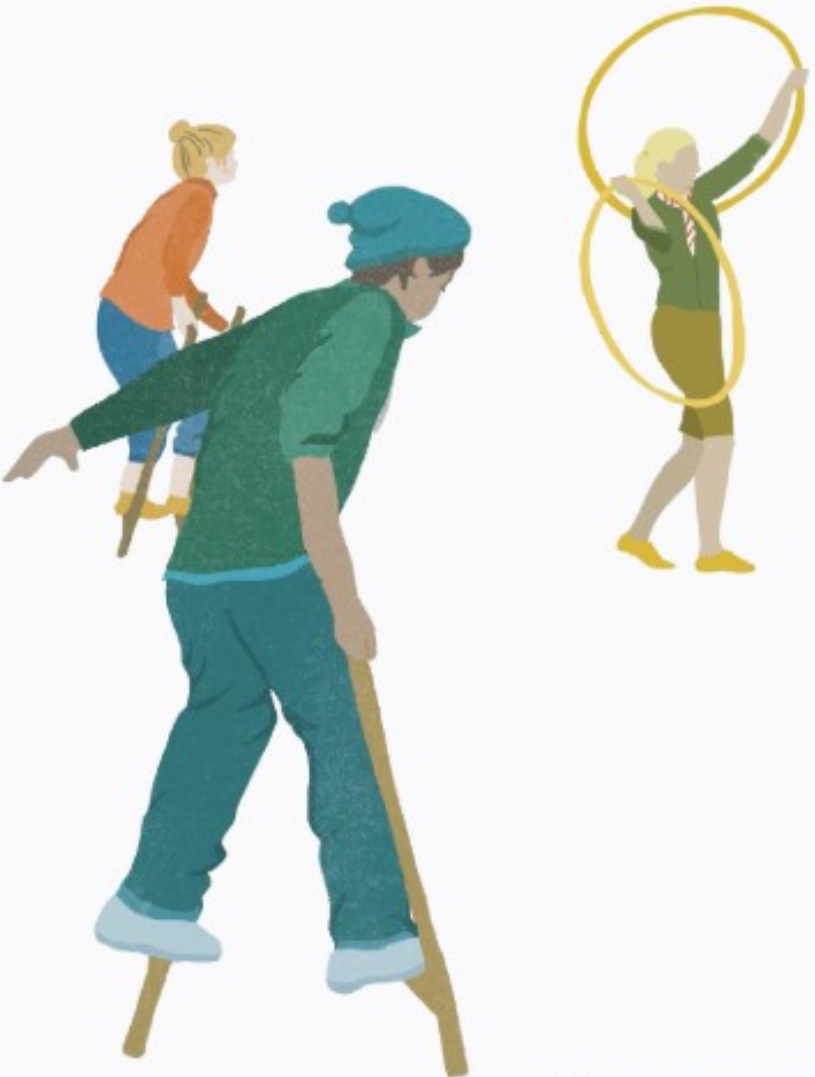


# SKILLS CHALLENGE

---

Take part in at least three activities that require a number of problem solving skills



**SCOUTS**

## The Lawyer & The Box

You have a box, a key and a padlock.

You must send the box to the Lawyer.

The Lawyer has a separate padlock and key.



You must send the box locked to the Lawyer but you and the Lawyer cannot send your keys to each other.

How can you do this so the Lawyer can open the box (without breaking the box or padlocks)?

**Explanation:**

## Bridge of Knives

Get 3 glasses and 3 knives; they need to be the same as each other (i.e. all the knives the same length and glasses the same width and height).

Place the glasses a knife's length apart.

Build a bridge between the glasses using only the 3 knives.

The glasses must stay a knife's length apart from each other



## Knight or Knave

An island is ruled by Knights and Knaves.

Knights, being honourable, always tell the truth; Knaves however always lie.

On the island you are approached by two people. The first one points to the second and says, "he is a knave". The second one then says, "neither of us are knaves".

What are they actually?

**Explanation:**

# Matchstick Problems

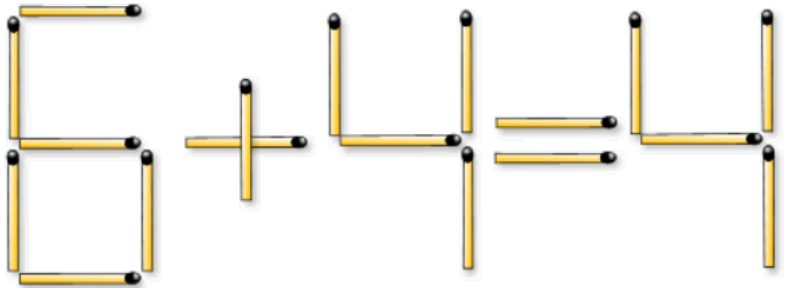


Make a square by moving just 1 match.

---

Make the calculation true by moving just 1 match.

Find as many solutions as you can (there's at least 3).



---

## The Fuse & the Matches

You have a string fuse which will burn from end to end in 1 minute.

The fuse will burn erratically—slowly at first, then quickly, then slowly again and so on.

You have matches but no watch or clock.

Using just the matches and fuse, how can you measure exactly 30 seconds?

**Explanation:**